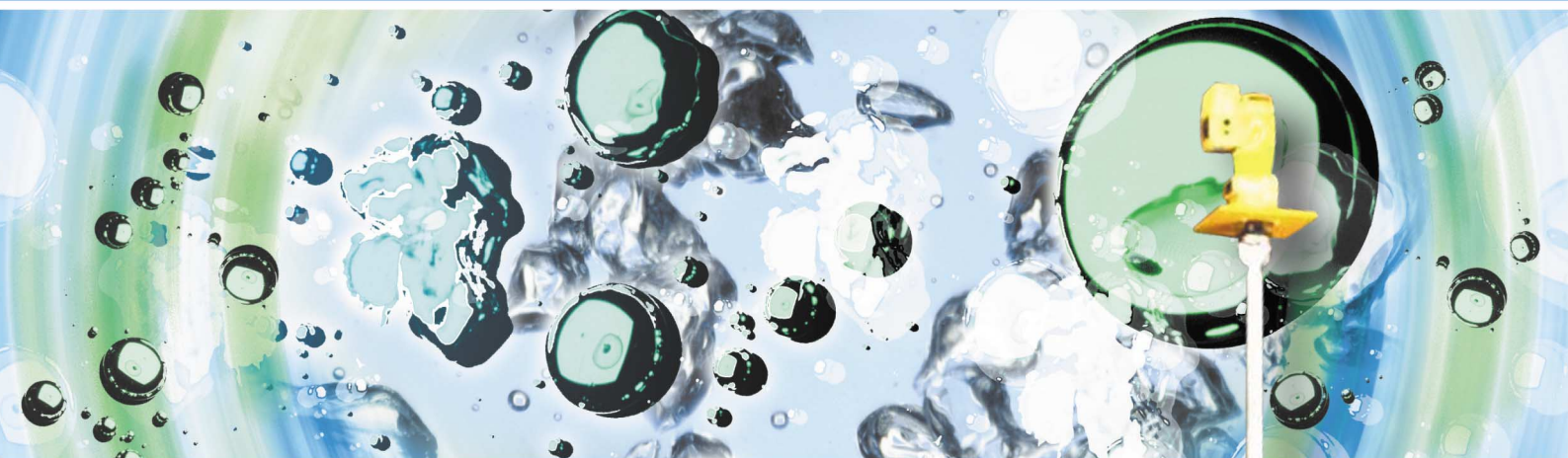


HELISEM® RANGE

FR SERIES MIXERS

Open tanks from 1 to 400 m³ – Atmospheric pressure – Temperature up to 90°C



TYPE FRF



General characteristics

- HELISEM® range, well dedicated to open tanks, is appropriate for the treatment of urban and industrial water
- Agitators type VLA, VRG and VRT, are adapted to current applications
- Types FR are exclusively reserved for flocculation
- The shape of the propeller and the very slow speed allow an optimal flocculation



Capacities

- From 1 to 400 m³ approximately



Operating conditions

- Atmospheric pressure
- Temperature up to 90°C



Composition

- 1 motor
- 1 speed reducer
- 1 shaft
- 1 blade impeller R type



Application

- Flocculation



Options :

- Variable speed drive
- Base plate
- Second impeller
- Stainless steel 316L, 304L, carbon steel...



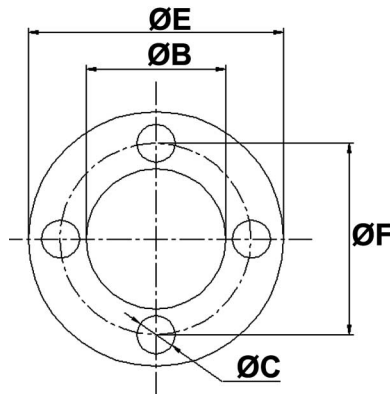
MILTON ROY
Mixing

SPÉCIFICATIONS

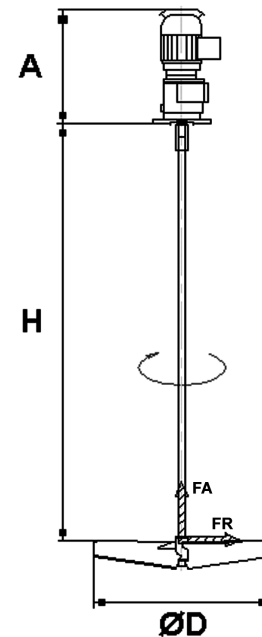
Type	Rated power (kW)	Rotation speed (rpm)	Maximum height (mm) H	Propeller Diameter (mm) D	Propeller flowrate (m³/h)	Weight (Kg)	Axial load (DaN)	Torque (DaNm)
0041S	0.37	70.3	1000	400	217	24	2	5
0051S	0.37	56.3	1200	500	340	26	3	6.3
0061S	0.37	49.3	1400	600	515	27	4	7.2
0081S	0.37	35.2	1800	800	870	42	6	10
0101S	0.37	28.7	1500	1000	1386	49	10	12.3
0102S	0.37	28.7	2200	1000	1386	54	10	12.3
0121S	0.37	23.7	1700	1200	1976	58	14	14.9
0122S	0.37	23.7	2600	1200	1976	62	14	14.9
0141S	0.37	19.2	1800	1400	2543	61	17	18.4
0142S	0.37	19.2	3000	1400	2543	69	17	18.4
0162S	0.37	16.7	3400	1600	3308	77	22	21.2
0203S	0.37	14.9	4200	2000	5739	141	43	23.7
0252S	0.55	11	3300	2500	8269	211	57	47.8
0302S	0.75	9.8	4500	3000	12723	316	93	73.1
0362S	1.1	8	7200	3600	18076	662	131	131.3

DIMENSIONS (MM)

Type	A	B	C	E	F
0041S	370	110	160	130	90
0051S	370	110	160	130	90
0061S	370	110	160	130	90
0081S	370	110	160	165	110
0101S	385	130	200	165	110
0102S	385	130	200	165	110
0121S	385	130	200	165	110
0122S	385	130	200	165	110
0141S	385	130	200	165	110
0142S	385	130	200	165	110
0162S	385	130	200	165	110
0203S	414	180	250	215	135
0252S	463	230	300	265	135
0302S	522	250	350	300	175
0362S	550	250	350	300	175



Extract of the range,
please consult us
for any other request.



DOSAPRO MILTON ROY

DOSAPRO MILTON ROY
10, Grande Rue
27360 PONT SAINT PIERRE
FRANCE
Tel : +33 (0) 2.32.68.30.00
Fax : +33 (0) 2.32.68.30.93
www.dosapro.com

UNITED KINGDOM – MILTON ROY UK, LTD
Oaklands Business Centre, Oaklands Park,
Wokingham Berkshire RG 41 2FD
Tel : +44 118 977 1066 Fax : +44 118 977 1198
www.miltonroypumps.co.uk

ESPAÑA - DOSAPRO MILTON ROY IBERICA
C/ Embajadores, 100 – 28012 Madrid
Tel : +34 (91) 517 80 00 Fax : +34 (91) 517 52 38
www.dosapro.es

ITALIA – MILTON ROY ITALIA
Centro Direzionale Colleoni, palazzo andromeda ingresso 1,
via paracelso 16, 20041 Agrate Brianza (MI)
Tel : +39 039 605 68 91 Fax : +39 039 605 69 06
www.miltonroy.it

MILTON ROY Mixing

MILTON ROY MIXING
10, rue du bois Gasseau BP N°94
77212 AVON Cedex
FRANCE
Tel : +33 (0) 1.60.74.95.20
Fax : +33 (0) 1.60.74.95.29
www.miltonroymixing.com