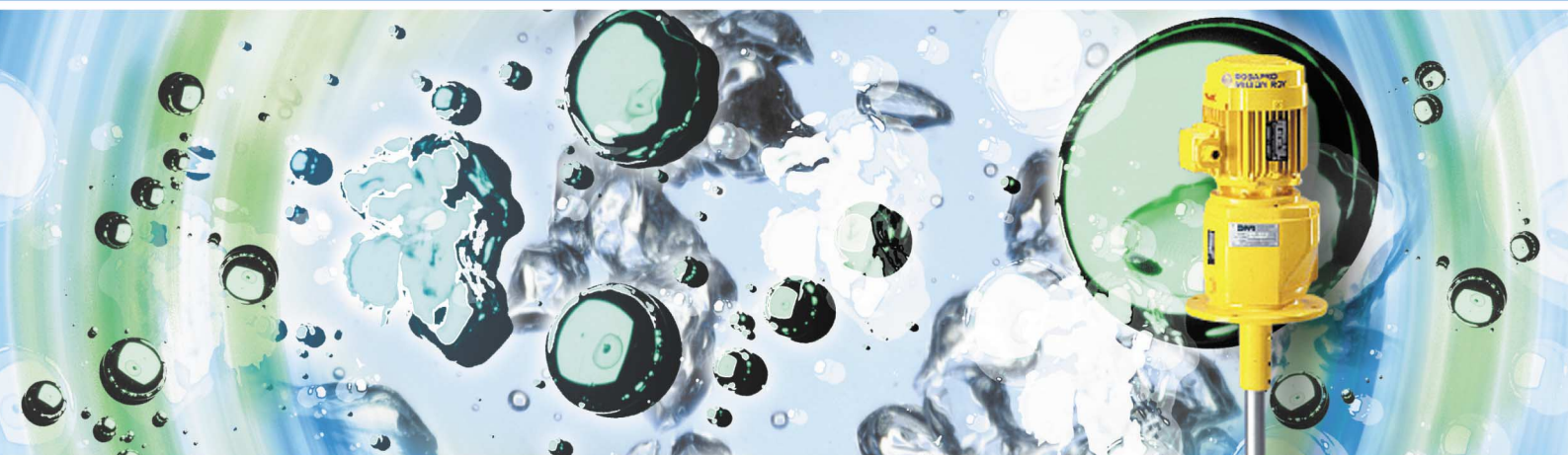


HELISEM® RANGE

VR SERIES MIXERS

Open tanks from 3 to 200 m³ – Atmospheric pressure – Temperature up to 90°C



TYPE VRT

General characteristics

- Agitators provided with a gear drive unit
- Lower shaft fitted with a Sabre® impeller for multiple applications

Capacities

- From 3 to 200 m³ approximately

Operating conditions

- Atmospheric pressure
- Temperature <100°C

Main applications

Water treatment:

- Homogenization
- Additives preparation
- Suspension
- Flashmixing

Other industries:

- Dissolution
- Heat transfer
- Suspension
- Storage

Construction materials

- Stainless steel 316 L
- Painting PU : RAL 1018 on the drive system (please consult us for any other material)

Electric characteristics

- 230/400 V three-phase
- 50 Hz
- IP 55 (please consult us for any other voltage or frequency)

Options (depending on mixer type)

- Special motors
- Drive ADF, ATEX
- Variable speed drive
- Second impeller

A robust construction

- Allowing a reduced maintenance
- Rotation during filling and draining allowed

Operational limits

- Viscosity < 100 mPas
- Density < 1,2
- Not recommended for gas-liquid environments (please consult us for any other viscosity or density)



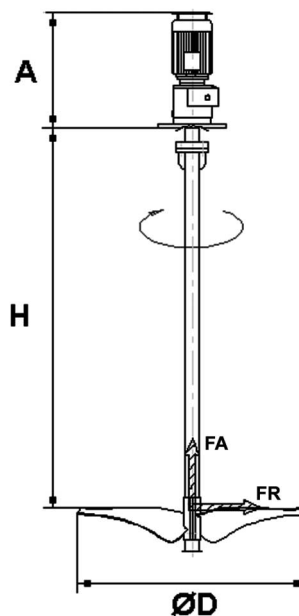
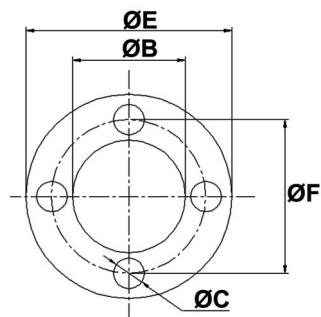
MILTON ROY
Mixing

SPECIFICATIONS

Type	Rated power (kW)	Rotation speed (rpm)	Maximum height (mm) H	Propeller diameter (mm) D	Propeller flowrate (m ³ /h)	Weight (Kg)	Axial load (DaN)	Couple (DaNm)
2081S	0.75	118.4	1600	850	1615	44	36	6
2162S	0.75	39.3	3600	1600	3577	123	49	18.2
4123S	1.5	86.9	2800	1200	3333	107	75	16.5
5102S	2.2	122.8	2500	1050	3156	127	87	17.1
5144S	2.2	69.3	3600	1400	4222	168	88	30.3
5182S	2.2	49.7	3200	1800	6416	177	121	42.3
6143S	3	81.6	4200	1400	4974	217	121	35.1
7124S	4	112.9	4000	1200	4333	214	124	33.8

DIMENSIONS (MM)

Type	A	B	C	E	F
2081S	398	130	11	200	165
2162S	442	180	13.5	250	215
4123S	470	180	13.5	250	215
5102S	546	230	13.5	300	265
5144S	546	230	13.5	300	265
5182S	546	230	13.5	300	265
6143S	585	250	17.5	350	300
7124S	599	250	17.5	350	300



Extract of the range, please consult us for any other request.

DOSAPRO MILTON ROY

DOSAPRO MILTON ROY
10, Grande Rue
27360 PONT SAINT PIERRE
FRANCE
Tel : +33 (0) 2.32.68.30.00
Fax : +33 (0) 2.32.68.30.93
www.dosapro.com

UNITED KINGDOM – MILTON ROY UK, LTD
Oaklands Business Centre, Oaklands Park,
Wokingham Berkshire RG 41 2FD
Tel : +44 118 977 1066 Fax : +44 118 977 1198
www.miltonroyumps.co.uk

ESPAÑA - DOSAPRO MILTON ROY IBERICA
C/ Embajadores, 100 – 28012 Madrid
Tel : +34 (91) 517 80 00 Fax : +34 (91) 517 52 38
www.dosapro.es

ITALIA – MILTON ROY ITALIA
Centro Direzionale Colleoni, palazzo andromeda ingresso 1,
via paracelso 16, 20041 Agrate Brianza (MI)
Tel : +39 039 605 68 91 Fax : +39 039 605 69 06
www.miltonroy.it

MILTON ROY Mixing

MILTON ROY MIXING
10, rue du bois Gasseau BP N°94
77212 AVON Cedex
FRANCE
Tel : +33 (0) 1.60.74.95.20
Fax : +33 (0) 1.60.74.95.29
www.miltonroymixing.com